

# Christ Church United Methodist

January 12, 2020

9:00 and 11:15 am

## Baptism of our Lord

### Order of Worship

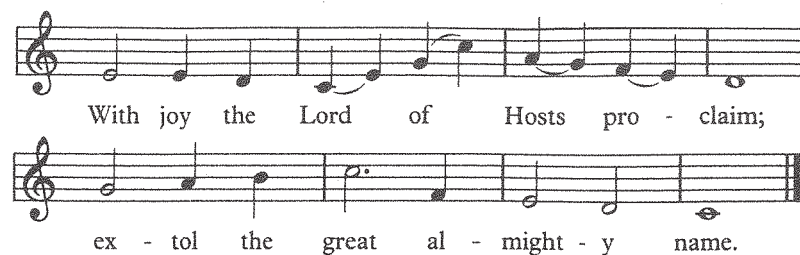
Please silence your cell phone and other electronic devices.

PRELUDE *The Tree of Life* Traditional Shaker melody  
arr. Paula Cooper Matthews  
Suzie Kinman, flute Ben Williams, oboe Eva Rouse, cello

\*HYMN OF PRAISE *Holy, Holy, Holy! Lord God Almighty* Hymn 64

PSALTER 9:00 Rev. Brandon Dirks  
11:15 Rev. Jacob Cogman

#### Response



#### Response

Leader: Ascribe to the Lord, O heavenly beings,  
ascribe to the Lord glory and strength.

People: Ascribe to the Lord the glory of his name;  
worship the Lord in holy splendor.

Leader: The voice of the Lord is upon the waters;  
the God of glory thunders, the Lord, upon many waters.

People: The voice of the Lord is powerful,  
the voice of the Lord is full of majesty.

#### Response

Leader: The voice of the Lord breaks the cedars,  
People: the Lord breaks the cedars of Lebanon.

Leader: The Lord makes Lebanon to skip like a calf,  
and Sirion like a young wild ox.

People: The voice of the Lord flashes forth flames of fire.

Leader: The voice of the Lord shakes the wilderness.

People: the Lord shakes the wilderness of Kadesh.

Leader: The voice of the Lord makes the oaks to whirl  
and strips the forests bare;

People: and in his temple all cry, "Glory!"

Leader: The Lord sits enthroned over the flood;  
the Lord sits enthroned as Ruler for ever.

People: May the Lord give strength to his people!  
May the Lord bless his people with peace!

#### Response

#### BAPTISMAL COVENANT (11:15)

Charlotte Kathryn Hanrahan (3/24/2019), daughter of Adam and Sarah Hanrahan

Pastor: Members of the household of faith, I commend to your love and care  
Charlotte, whom we this day recognize as a member of the family of God.  
Will you endeavor so to live that she may grow in the knowledge and love  
of God, through our Savior Jesus Christ?

People: With God's help, we will so order our lives after the example of Christ  
that Charlotte, surrounded by steadfast love, may be established in the  
faith and confirmed and strengthened in the way that leads to life eternal.

BAPTISMAL RESPONSE Hymn 609  
You have put on Christ, in Christ you have been baptized.  
Alleluia! Alleluia!

#### PASTORAL PRAYER

#### THE LORD'S PRAYER

Our Father who art in heaven, hallowed be thy name.  
Thy kingdom come, thy will be done on earth as it is in heaven.  
Give us this day our daily bread.  
And forgive us our trespasses,  
as we forgive those who trespass against us.  
And lead us not into temptation, but deliver us from evil.  
For thine is the kingdom, and the power, and the glory, forever. Amen.

OFFERING (Please sign the attendance pad as it is passed down the pew.)  
9:00 *God So Loved the World* Dan and Heidi Goeller  
Chancel Choir

11:15 *The Yearning* Craig Courtney  
One Voice  
Kathy Kicklighter, piano

#### \*DOXOLOGY

Praise God, from whom all blessings flow;  
praise Him, all creatures here below;  
praise Him above, ye heavenly host;  
praise Father, Son, and Holy Ghost. Amen

*Children Kindergarten through Second Grade may follow the banner  
out the side door of the Sanctuary for Children's Chapel in Room 132.*

SCRIPTURE *Matthew 3:13-17* Page 3 (NT) in the pew Bible  
9:00 Tom Goodwin  
11:15 Bill Higgs

SERMON *Remember Who You Are* Rev. Rebecca Curry

\*REMEMBERING YOUR BAPTISM Page 50 in the Hymnal  
*You are invited to come forward as the Spirit leads you to touch the water and  
remember your baptism.*

#### \*INVITATION TO CHRISTIAN DISCIPLESHIP

CLOSING HYMN *Fairest Lord Jesus* Hymn 189

#### \*SENDING FORTH

\*POSTLUDE *Sent Forth By God's Blessing* The ASH GROVE

## Announcements

**Charge Conference** to set the 2020 budget is scheduled for Monday, January 27 at  
6:30 pm in Room 158. All Ad Council members are asked to attend and all church  
members are welcome to attend. Prearranged childcare is available.

**Collecting Birthdates** Recently we had the blessing of celebrating the birthday of  
a 100-year old church member. We want to celebrate you, too! For many of you,  
we don't have birthday information that helps us know about milestones. Please  
send us your date of birth, month, day and year, or add the information to your  
profile at [ccum.com/online](http://ccum.com/online). OR e-mail your information to Lisa at [lisa@ccum.net](mailto:lisa@ccum.net)  
and she'll add it for you. Let a staff member know if you have questions or need  
help!

**Christ Church, Let's have lunch!** Come for fellowship, to meet new people, share  
a devotion, and just have fun. We will meet in the Cafe Wednesday, January 22 at  
11:45 am. Let me know you're coming by Monday January 20 at noon so I can  
have plenty of tables ready. Email Lisa at [lisa@ccum.net](mailto:lisa@ccum.net) or call 502-893-2201 x245.  
I look forward to seeing you soon!

## This Morning

The flowers in the chancel area this morning are given by Jeff and Melodie Harden  
in loving memory of our parents, Pat and Vernon Harden, and Ron White.

## Our Church Family (as of Wednesday, January 8)

Hospital and Rehab: Jary Freeman [Episcopal Church Home]; Nancy Hampton  
[Dominion Senior Living]

Christian Sympathy is extended to Clarese Fuller on the death of her brother,  
Gerald Miller, who died December 30.

**Large-print hymnals and bulletins, weighted bulletins  
and hearing devices and loops are available. Please  
ask an usher if you need assistance.**

## Presence and Gifts (as of Sunday, January 5)

Brownsboro Road Worship	793	Sunday Prepare Groups	446
Plant Faith Communities	108	December Small Groups	497
Livestream Worship	171		
	1,072		

Contributions Received Week Ending January 5, 2020: \$ 24,760

Budgeted Contributions through December 31, 2019: \$3,867,979

Actual Contributions Received through December 31, 2019: \$3,630,844



*Becoming living proof of God's love, one person at a time.*

## Welcome Guests!

We are honored to worship with you today. No matter where you are in your faith journey, you are welcome here.

We are pursuing a mission of *becoming living proof of God's love, one person at a time*. We walk together on this journey of discovering a different kind of life – the life we were created for – life in God's love.

All are invited to participate in Communion here. We welcome children of all ages into the service and to participate; later in the service children are dismissed for their own time of worship and community.\*

### Connect With Us

- Fill out the Connect Card and drop it in the offering plate during the service.
- Take home the Guest Information Card in the pew.
- Stop by the Guest Information Area in the Gathering Hall.

\*Children's Activities are provided during all services 8 am to 12:15 pm in the Education Wing. See the Guest Services Desks for more information.



### Worship

8:30 am Communion: Prayer Room  
9 am: Sanctuary  
10:05 am: Chapel  
11:15 am: Sanctuary



### Prepare

**Get Fit!** Did you know we offer free, fun and encouraging fitness classes at Christ Church? Any and all are welcome! Monday REFIT® at 6:15 pm in the Gym; Friday REV+FLOW at 9:15 am in Fellowship Hall; Saturday REFIT® at 8 am in the Gym. For more information, contact Jenny Fishback at [jrosenthal77@yahoo.com](mailto:jrosenthal77@yahoo.com) or visit REFIT + Jenny and friends on Facebook and Instagram.

Please join us for a new **Grief Support Group** led by Rev. Melissa Head. This group will meet Wednesdays January 22 to February 19 from 11 am to noon in the Prayer room. Call or e-mail Alicia Lewis at [alicia@ccum.net](mailto:alicia@ccum.net) or 893-2201x226, to register. All are welcome from our church and the community.

**Adult Classes to begin this week** Several classes for adults will begin this week, including a study of the New Testament, Christian Practices and a Study of "Celebration of Discipline." Go to [www.ccum.net/get-involved/adults/adult-studies-classes](http://www.ccum.net/get-involved/adults/adult-studies-classes) to find details about all the studies being offered and to register.



### Serve

**Love the Hungry** Join us on today at 6 pm in the Fellowship Hall as we pack over 20,000 meals to love the hungry in our city and around the world! All are welcome.

**Blood Drive** Tuesday, January 21 from 2 to 7 pm in Fellowship Hall. Walk-ins are welcome and appointments can also be made for your convenience. Contact Kim Brice at (502) 727-2581 for appointments and for more information.

## OUR MISSION

*Becoming living proof of God's love, one person at a time.*

## OUR VISION

*Healing Divides as we:*

### ENGAGE IN SMALL GROUPS

Becoming who God is calling you to be by experiencing the power and presence of Christ in a spiritually authentic small group.

### PLANT NEW FAITH COMMUNITIES

Supporting fresh ways to bring the light of God to new communities of people.

### BLESS CHILDREN

Meeting the basic needs of food, shelter, education, hope and love for Louisville's children and adolescents.

## OUR STRATEGY



## THE FOUR QUESTIONS

**WHERE** have you seen God's love at work this week?

**HOW** are you growing in God's love this week?

**WHO** has God placed in your path that needs to experience God's love this week?

**HOW** have you demonstrated God's love this week?



4614 Brownsboro Road • Louisville, KY 40207  
(502) 897-6421 • [www.ccum.net](http://www.ccum.net)

